

# GAMBURD

Overhead Lifts  
Stairlifts / Ramps  
Barrier-Free Showers  
Bath Safety / Vertical Lifts



*Scan to view  
this catalog  
online*

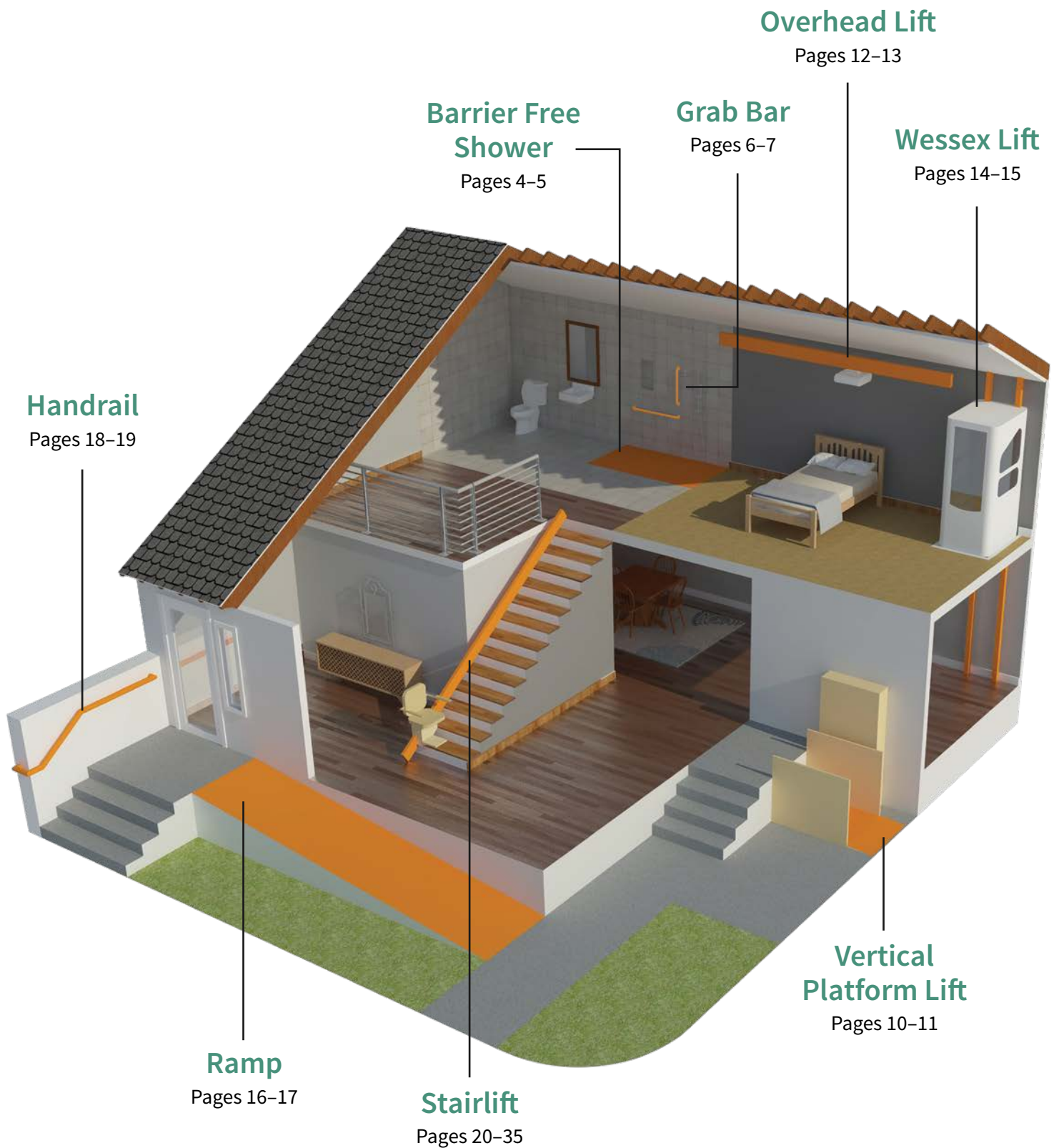
(877) 362-4597  
[www.gamburd.com](http://www.gamburd.com)

***Mobility Equipment  
Provided, Installed  
and Serviced  
Locally***

2019



# Learn about all the ways you can make your home accessible



According to the Centers for Disease Control and Prevention, 1 in 4 older adults (age 65+) fall each year. Many of these falls can be prevented by making your home safer and more accessible. Below are three key areas you can check by yourself to improve home safety.

### Access to the home

#### Are there steps at the primary entrance to the home?

- Fix loose or uneven steps
- Add lighting/motion sensors
- Install railings
- Install a ramp and/or stairlift
- Remove clutter from the entryway
  
- Wheel chair lift
- Install ramps
- Install threshold ramps
- Install towel grab bars
- Remove suction cup grab bars
- Overhead lifts
- Toilet risers
- Vertical platform lift

### Navigation throughout the home

#### Look at your floors and hallways

- Remove small throw rugs or affix rugs to the floor to keep them from slipping
- Pick things up off the floor
- Install railings in the hallways

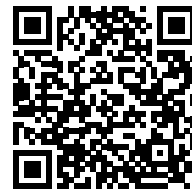
#### Do you have stairs within your home?

- Add lighting at top and bottom of stairs
- Add railings to one or both sides of stairs
- Install a stairlift

### Bathroom safety

#### Do you need support when you get in and out of the tub/shower or up from the toilet?

- Install grab bars or a floor-to-ceiling safety pole by the tub/shower, and/or a transfer bench
- Add grab bars or a floor-to-ceiling safety pole by the toilet
- Add non-slip coating on the floor of the tub/shower
- Install a tub cutout in your bathtub
- Replace the tub with a barrier-free shower



Scan to  
Learn More

<https://www.gamburd.com/blog-all/home-accessibility-review>



(877) 362-4597

This Home Accessibility Review is being provided free of charge and is not a contract. It is provided solely for the purpose of highlighting possible safety issues in those areas of your home described herein. This Review does not address every potential safety issue that may be present in your home before, during, or after our visit. Neither our findings nor any suggestions contained herein are to be construed as being health care or safety related advice or instruction. You are solely responsible for obtaining a medical diagnosis from your health care provider, and specific home repair and safety recommendations from a qualified home modification contractor. Gamburd, and its parent, subsidiaries, affiliates, officers, members, employees and/or agents, expressly disclaim any liability with respect to: the findings and/or suggestions set forth herein; the consequences of any actions taken on the basis of the information provided or omitted from this Review; and/or, any accidents, property damages, or injuries that may occur in your home before, during, or after the date of this Review. Further, this Review is for the exclusive use of the homeowner and may not be copied or disseminated without the prior written approval of Gamburd.

# BATHROOM REMODELING



## Custom Bathroom Remodeling

We specialize in designing unique accessible bathrooms and showers that are safe, functional and attractive. Our unique process starts with a free home consultation and a 3D design showing exactly how the transformation will look when completed. In most cases we can transform a standard 5' x 10' bathroom making it more accessible by removing a tub and recessing a toilet into a wall. In other cases we may take space from an adjacent bedroom or maybe closet.

### Barrier-Free

Open concept bathrooms offer state-of-the-art features. With floors sloped to linear drains, shower curbs and shower doors can disappear, creating barrier-free bathrooms. Accessible showers not only create beautiful spaces, they also provide freedom and security to individuals with limited mobility, or homeowners wanting to age in place. This combination of style and accessibility provides greater value to a bathroom, where today's barrier-free bathroom built for its design, will continue to provide homeowners with independence in the future.

### Lead Time

Depending on the complexity an accessible bathroom remodel can take between 1 and 4 weeks.

### Types of shower

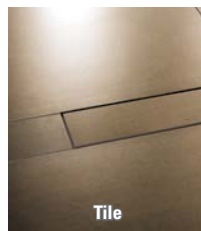
Our traditional showers are built out of tile or stone and water proofed using Schluter Systems. We also offer a pre-fabricated option that can cost less and install quicker than our traditional system.

### Who Does the Work?

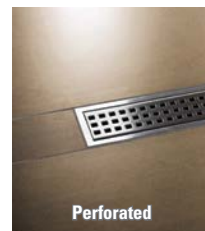
All of the work is done by our full time team members who are Schluter Systems certified installers. A project manager is assigned to a project who would be in charge of communicating and making sure that the project is done on budget and time.

### Products We Like to Use

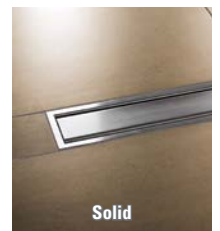
#### 3 linear drains to choose from



Tile

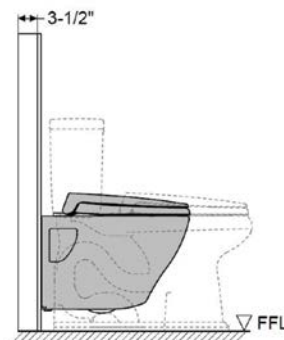


Perforated



Solid

### Recessed wall hung toilet



**9" of space saved over traditional floor-mounted toilet**

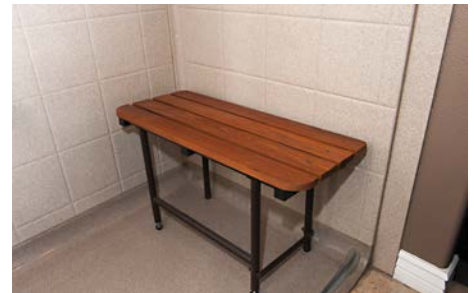
**WE ARE LICENSED CONTRACTORS!**



## Modular Bathroom Remodeling

### Remove Obstacles and Add Independence

Our barrier free showers offer nonslip pans and are manufactured with the most wood backing in the industry, to allow for grab bars to be placed anywhere they're needed for optimal safety and comfort. Multi-piece showers make it easy to install in most situation. You may add tiled inserts on walls or floor. Optional accessories available such as a folding bench, a collapsible water retainer or linear drain. These showers are completely customizable!



***We have this shower  
in our showroom***

**GAMBURD**

Scan to Learn More

Scan the QR code with camera or visit  
[https://www.gamburd.com/  
accessible-showers/](https://www.gamburd.com/accessible-showers/)



# GRAB BARS



## Grab Bars = Safety

Sometimes we wait for the worst to happen before making decisions regarding our living environment and the obstacles that we face daily. Grab bars are a simple way to make your bathroom area a safer place.

Grab bars should be installed near the tub and shower and next to the toilet for a universally-safe bath. Whether it's for young children just starting to shower on their own, the elderly, or someone suffering from a sports injury or recovering from surgery, grab bars are simple to install and offer a huge helping hand. Especially if you have a senior in your life, this is the best safety device you can buy.

Falling is the leading cause of injury resulting in death among people 65 years and older, according to the National Center for Injury Prevention and Control.

## How Much Do We Charge?

We charge a flat fee of \$150.00 for each grab bar. This includes a straight grab bar, stainless hardware and installation (2 grab bar minimum required).



Scan To Learn More

Scan the QR code with camera or visit <https://www.gamburd.com/bath-safety/grab-bars>

White



Stainless

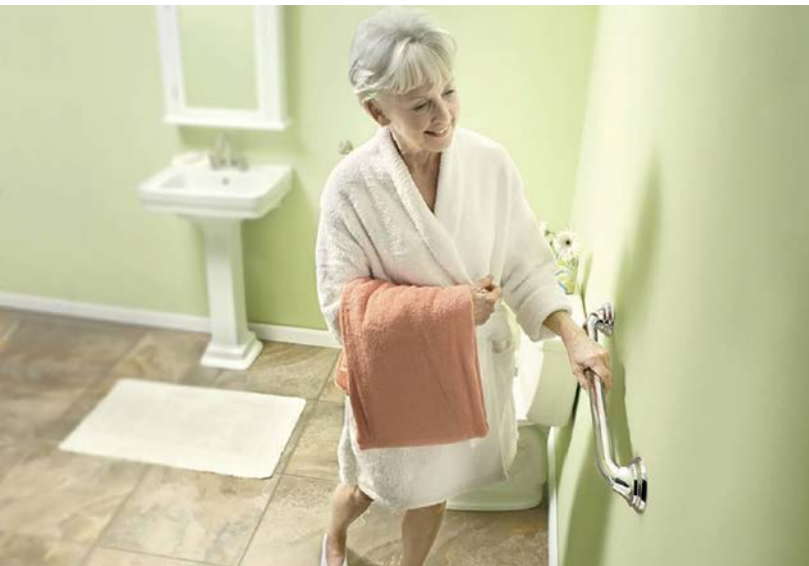


### White & Stainless Knurled Grab Bars

- 18" grab bar, stainless or white, 9-hole flange, flange covers, 1.25"x18"/3.
- 24" grab bar, stainless or white, 9-hole flange, flange covers, 1.25"x24"/3.
- 32" grab bar, stainless or white, 9-hole flange, flange covers, 1.25"x32"/3.
- 36" grab bar, stainless or white, 9-hole flange, flange covers, 1.25"x36"/3.



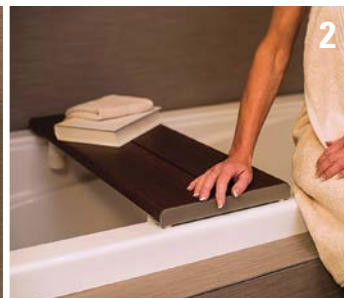
- Best line of defense against slip and fall accidents.
- Does not attract dirt, prevents grout from soiling
- Entirely green, water-based solution, dries crystal-clear.



## Options

### Decorative Bars

1. Accent Ring
2. Bath Bench
3. Corner Shelf
4. Corner Shower Seat
5. Serenaseat – Wall-Mounted Shower Seat
6. Shampoo Shelf
7. Soap Dish
8. Toilet Paper Holder
9. Towel Bar



## Price

Scan the code for pricing



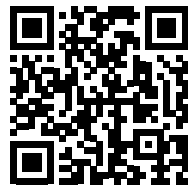
**GAMBURD**

(877) 362-4597

# TUB CUT



**Convert your shower  
into a tub in just hours!**



**Scan To Learn More**

Scan the QR code with camera or visit  
<https://www.gamburd.com/tubcutbath>



## Step

**Adds Step-In Accessibility to Your Existing Tub**

- Transforms your tub into a step-in shower
- Comes in beige and white
- Our most affordable product!



## Door

**Adds a Water-Tight Door for Taking a Full Bath**

- Step in, then take a bath or shower
- Left or right hinge configuration
- Allows for easy bathing solution!



## Ultra Low

Adds Step-In Accessibility to Higher Profile Tubs

- Transforms your tub into a step-in shower
- Comes in beige and white
- Ideal for tall tubs!



## Convertible

Configures from Step-In to Full Bath in Seconds

- Configure as traditional bath or step-in shower
- Removable unit locks and unlocks quickly
- Our most versatile product - easily switch back and forth!

# BRUNO VERTICAL PLATFORM LIFTS



## Count on Bruno Quality

### Easy-To-Use

Pressure control rocker switch up/down operation. Automatic self-lowering ramp folds down for smooth roll on/off access; folds up when in use to create a safety barrier.

### High-Performance

Lift capacity of 750 lbs/340 kg. Smooth, quiet ride. Made-in-the-USA quality.

### Safe

Unit shuts down when obstruction is touched under platform. Emergency stop switch on platform.

### Reliable

Continuously charged DC battery-powered motor on lifts 10-feet and above ensures operation even in a power outage. Affordable AC in 4- and 6-foot units (DC battery powered optional). Gold warranty: 2 years, major components; 1 year, parts.

### Made in the USA!

## Fit Your Space and Life

### Minimum Space. Maximum Reach

Space-efficient Bruno wheelchair lifts can access heights from up to 14-feet.

### Indoor or Outdoor

Weather-resistant controls and specialized coating protect the unit. An optional canopy can protect you as well. Combat extreme winters with the optional cold weather package.

## Standard Features

- Automatic self-lowering folding ramp
- 750 lbs lifting capacity
- 53" and 75" maximum floor to floor height (model VPL-3153 and VPL-3175)
- Separate up and down push-button switches with key switch control
- Spring sensitive bottom plate shuts unit down when obstruction is encountered
- Solenoid actuated braking at the landings
- Welded steel tubular guide construction with formed 16 GA sheet steel guarding



## Optional Equipment

- Top landing gate includes call/send controls with key and mechanical interlock
- Manual hand crank lowering provided via top cap
- A cold weather package for existing or new VPLs, tested to improve performance to -20° F
- Removable “stay-dry” platform canopy
- Platform gate, a full 42” high, to provide added safety and security – includes electrical/mechanical interlock that releases when platform reaches lower landing
- 90°/adjacent platform
- Push button or paddle controls on the unit
- Push button or paddle landing controls

## Standard AC Powered Unit

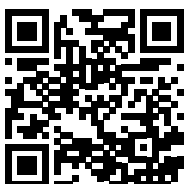
### Model VPL-3100 Series

- 1 hp motor, 1750 rpm, 110-120 volt 15 A 60 Hz dedicated power
- Solenoid actuated screw braking at the landings
- CSA/C-US listed

## DC Battery Powered Unit

### Model VPL-3100B Series

- 1/2 hp motor, 1750 rpm 24 V DC
- 5A 24 V DC output battery charger
- Standard 17 Ah batteries included
- Optional 34 Ah batteries
- CSA/C-US listed



See This Lift in Action

Scan the QR code with camera or visit  
<https://www.gamburd.com/bruno-vpl-product>

**GAMBURD**

# OVERHEAD CEILING LIFTS



## Overhead Lift

Manual lifting is soon a thing of the past. Today's market boasts a variety of patient lifts ranging from your standard patient floor lift to an overhead ceiling hoist system which can span your entire home. A standard patient floor lift can be manual or automatic. It is generally handled by the caregiver who rolls it around the home and transfers patient between bed, wheelchair and bathroom areas. The Hoyer lift is the most common lift you'll find as it is most affordable and there is no construction required for use. Some of the downfalls of a Hoyer include its limited ability to lift and maneuver in tight spaces and its difficulty to move throughout the home (especially on carpeted floors). In comparison, an overhead ceiling hoist system truly makes "lift and transfer" a breeze. Transferring a patient from bed to wheelchair is no longer a chore but instead a simple task. Ease of use while maintaining patient dignity and privacy are only a few of the benefits an overhead ceiling lift has to offer. Although they do come at a slightly higher price (depending on make, model and configuration) you will find that for patients with disabilities and their caregivers this tool may make all the difference. Overhead lifts can be operated by the patient alone or with the help of a caregiver. They take up no floor space and are very simple to operate. Use of an overhead lift eliminates the back breaking work most caregivers endure.

Overhead lifts are tailored to fit the patient as well as the home they live in. The process begins with a free home evaluation performed by one of Gamburd's skilled consultants. The evaluation includes a complete measure of the area in question as well as an interview with patient and their caregivers to go over functions of daily living, barriers in their home, safety precautions and health concerns. This interview and measure will serve as a basis for the configuration of the lift and ultimately the proposal Gamburd will provide. The proposal will be itemized and will include a schematic to give you an idea of what it will look like and how it will operate. Your Gamburd consultant will then schedule a follow up meeting to discuss the proposal and plans for installation. Because of the custom nature of the product, installation will vary from 1-7 business days depending on the configuration and complexity of the project.

You have several different options when choosing the right overhead lift for you.



See This Lift in Action

Scan the QR code with camera or visit  
<https://www.gamburd.com/patient-handling/>

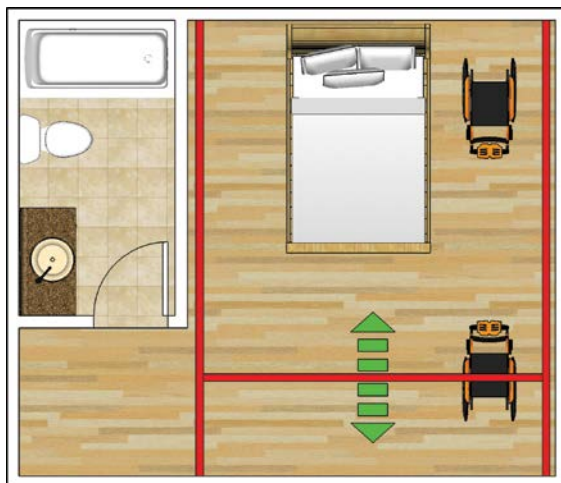
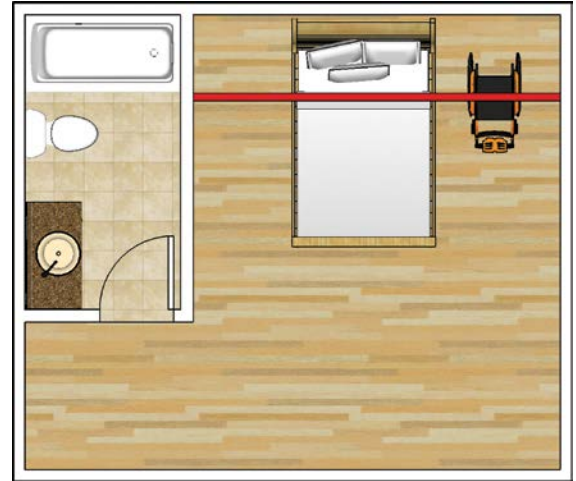
**GAMBURD**



## FINANCING AVAILABLE!

### Single Track System

The single track system is your most basic and affordable option. Its main purpose is to allow the user easy transfer between their bed, wheelchair, sitting chair or commode. The track will be installed over the bed but will also extend several feet on one end where the patient's wheelchair/chair/commode sits. This option takes one to two days of installation and will work well if you're looking for a minimal amount of coverage. Once installed the track becomes a permanent fixture and the bed and other furniture in the room can no longer be moved around. Pricing for such system will vary depending on length, installation and make + model choice. A Gamburd representative will be happy to perform an evaluation to see if the single track system option is right for you.

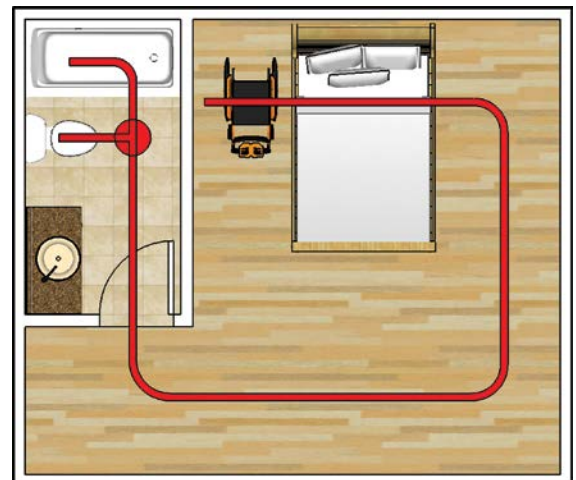


### Traverse System

The traverse system is our most popular option. It allows for transfers virtually in any area or position of the patient. A traverse system is comprised of three rails: 2 parallel and one perpendicular. The perpendicular track is positioned to ride back and forth on the parallel tracks allowing the motor access to almost any area of that room. This gives patient and caregiver freedom to use their space as most comfortable for them. The parallel tracks are positioned in the corners of the room while the perpendicular track is installed to access each parallel track at each end. This option can take from 1-2 days for installation and will allow for maximum coverage in one room. Once installed the tracks become permanent fixtures but in this case you may still be able to move your bed and furniture around as the nature of this system is somewhat fluid allowing for more transfers throughout the given space. Pricing for such system will vary depending on size of the room, length of track, installation time and make + model choice. A Gamburd representative will be happy to perform an evaluation to determine if the traverse system is right for you.

### Multi-Room System

The multi-room system is unique as it may ultimately allow a patient access throughout their entire home. This system can be fully automatic meaning the patient can access the lift on their own without help from a caregiver. This motorized system can lift a patient and move them from one room to another with the press of a button. It even has the capability to switch directions with automatic turn tables. This type of independence can be life-changing for both patient and caregiver alike. The tracks in this case are positioned throughout each affected room and are fully customized based on the patient's routine and the layout of one's home. The possibilities are endless with the multi-room system. Once installed the tracks become permanent fixtures and it may no longer be possible to move furniture around one's home. Installation can take up to 10 business days to complete but will vary by size of project. Pricing will also vary on size of each affected room, length of each track, installation time and make + model choice. A Gamburd representative will be happy to perform an evaluation to determine if the multi-room system is right for you.



# THROUGH FLOOR LIFTS



## A Lift Designed for Independence

Illuminated, ergonomically designed internal lift controls for ease of use. Powered door option for greater independence.

## Flexibility of Lift Installation Locations

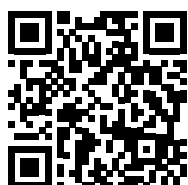
Free-standing design of our through floor lift does not require load bearing wall. Door opening and internal controls may be changed to left or right hand side to enable relocation of lift.

## Options

- Hand rails
- Power door M, L, XL model only
- Folding seat
- Mirror – Can't do mirror & seat

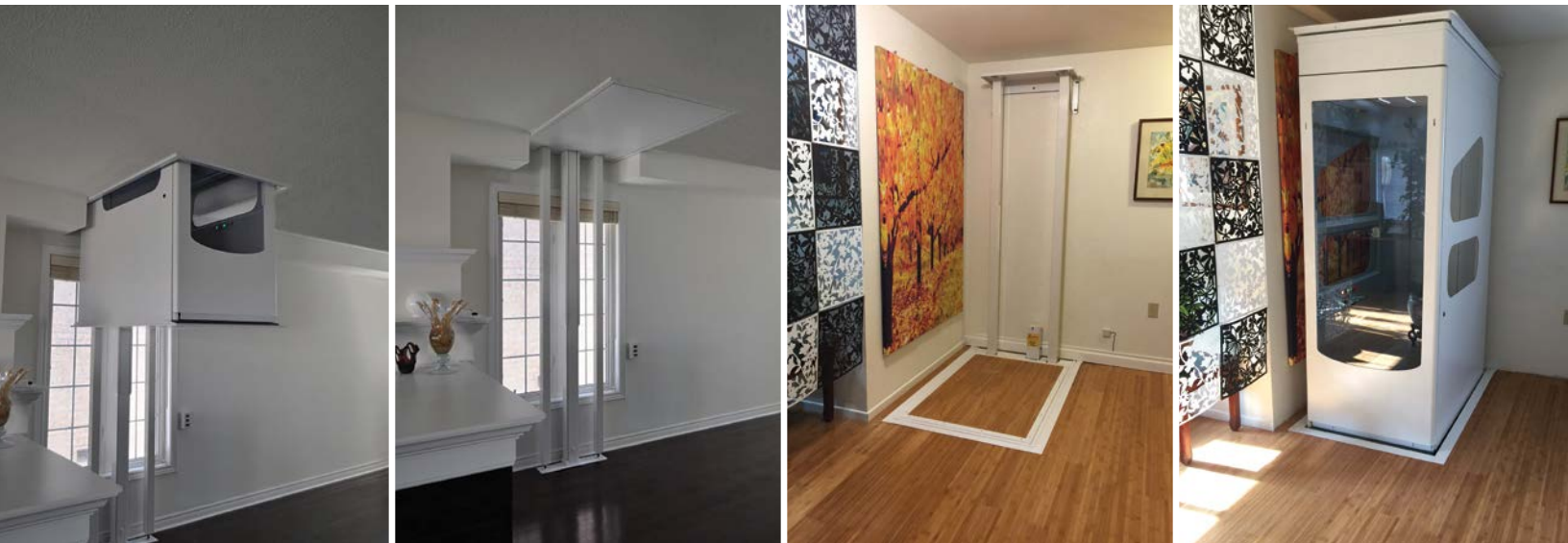
## Features

- Timer-controlled lights illuminate the lift car. They are activated automatically by the operation of the lift and switch off after a pre-set time.
- Fixed internal ramp. Lift takes less room for 'tighter' fits increasing space outside the lift for maneuvering a wheelchair.
- Lift arrives flat packed for ease of transport and entry into the home, where the lift is assembled by Gamburd trained technicians
- In the event of power failure emergency back-up systems operate the door, light and alarm, and lower the lift to the ground
- Free-standing lift tracks eliminates the need for a load-bearing wall, thus giving a wider choice of lift location
- Audible two-tone alarm with battery back-up is fitted as standard for use in an emergency
- Designed in accordance with the safety requirements
- Sensors built into the floating platforms prevent descent & ascent if obstructed
- Illuminated internal push button controls designed for ease of use
- Door and lift controls can be installed right or left to suit the user
- Half-hour fire integrity with lift parked at either floor
- Emergency in-car stop and lowering buttons
- Aesthetic side glazed panels
- Emergency manual lowering
- Panoramic glazed door
- Wireless call stations
- In car telephone
- Weight Capacity 550lbs



See This Lift in Action

Scan the QR code with camera or visit  
<https://www.gamburd.com/wessex-ve>



## Standard Specifications

	S VE15 / VE25	M VE31 / V51	L VE36 / V56	XL VE38 / VE58
118in Maximum Travel	VE15	VE31	VE36	VE38
137in Maximum Travel	VE25	VE51	VE56	VE58
Internal Width	30.5"	28.56"	30.5"	34.81"
Internal Length - Manual Door	23"	45.5"	47.44"	54.13"
Total External Length with Door Open to Wall	65.55"	86.25"	90.18"	101.18"
Total External Width Including Floating Platform	36.25"	34.25"	36.25"	40.55"
Total External Length Including Floating Platform to Wall	35.63"	58.06"	60.06"	66.75"
Internal Cabin Height - All Models	78.75"			
External Cabin Height 118in Models	81.94"			
External Cabin Height 137in Models	87.25"			
Minimum First Floor Ceiling Height 118in Models	89.75"			
Minimum First Floor Ceiling Height 137in Models	95.06"			
Mid-floor Dimensions	From 6.5" to 15.19"			
Safe Working Load	550 lbs			



# RAMPS



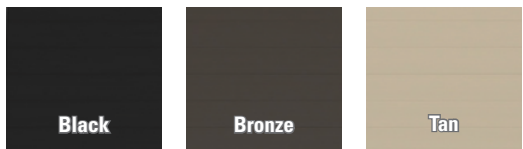
## Modular Ramp

The Modular Access System consists of aluminum ramps, platforms, and stairs offering infinite configurations to create safe and seamless access for both standard and unique entryways.

- Multiple handrail styles available: single rail, two-line, vertical pickets, and horizontal pickets
- Solid and expanded metal surface options available to best suit your exact needs
- Quick and easy installation means minimal disruption for you and your family; no poured footers, no construction - just simple assembly
- Virtually maintenance free, it will not rot or rust
- 1,000 lbs weight capacity

## Finish Options

An architectural finish comes standard on all of our systems. Powder coating is available for an additional cost and comes in three standard colors: black, bronze, and tan.



## Handrail Options

### Two-line Rail

The most popular handrail configuration, the two-line rail provides an additional gripping surface by adding a second rail below the continuous top rail.



### Vertical Pickets

Vertical pickets offer an added level of safety, especially for children and small pets. Our pre-assembled aluminum inserts meet the 4-inch sphere rule for spacing.



### Horizontal Pickets

Horizontal pickets offer an aesthetic option while maintaining safety. These horizontal inserts run parallel to the topmost rail and can be installed on standard PATHWAY handrail posts.



## Angle Platform

Allows for multi-dimensional angle changes and uses less space.

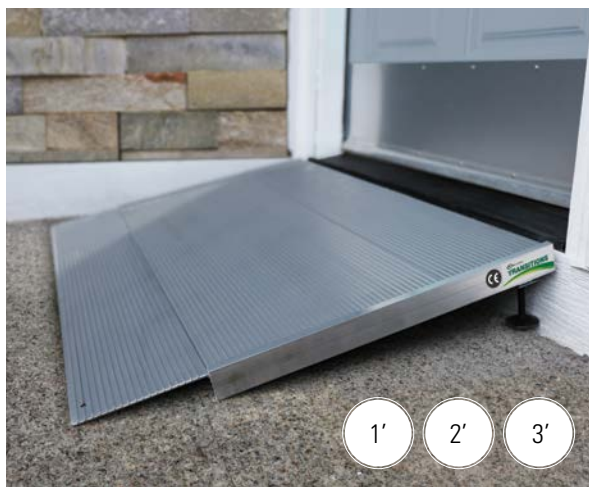




## Singlefold Ramp

Made of lightweight aluminum, the Singlefold Ramp is ideal for at home or on the go with its quick set up and easy-to-carry design.

- Ergonomically-designed handles allow you to carry it anywhere
- Features an extruded slip-resistant tread for superior traction
- Self-adjusting bottom transition plate makes for a smooth change to any surface
- Non-protruding hinge helps protect against pinching and ensures strength and stability
- 800 lbs weight capacity



## Angled Entry Ramp

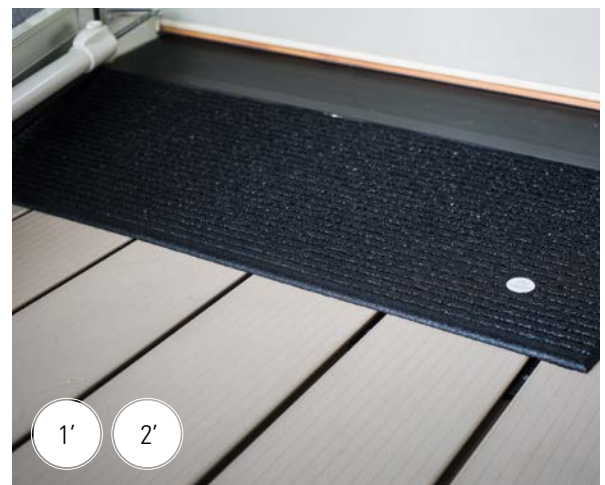
The Angled Entry Ramp is a free standing threshold solution made of high-strength aluminum that can be set up quickly to allow smooth ground-to-sill transitions.

- Ideal for entryways with doors that swing in and out, uneven surfaces, or single step rises
- Features an extruded slip-resistant tread for superior traction
- Independently adjustable legs with swivel feet allow for vertical adjustment ranging from 1-3/8 to 5-7/8 inches in height
- 700 lbs weight capacity

## Angled Entry Mat

The Angled Entry Mat accommodates doorways inside and out, providing a smooth and safe entry or exit.

- Beveled edges allow cross-traffic access
- Made with 100% recycled rubber
- Available in three colors: black, storm gray, and hazelnut brown
- 850 lbs weight capacity



# MODULAR HANDRAILS

## Modular Handrail Finishes

### Modern Champagne Anodized Aluminum



### Traditional Architectural Bronze



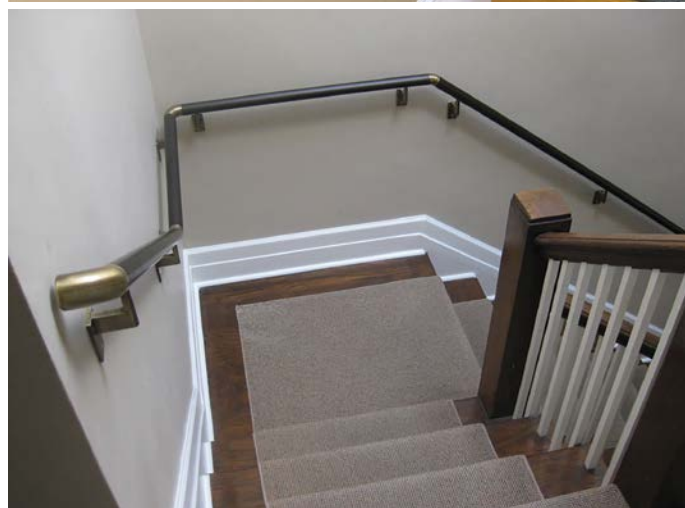
### Satin Black



### Red Oak



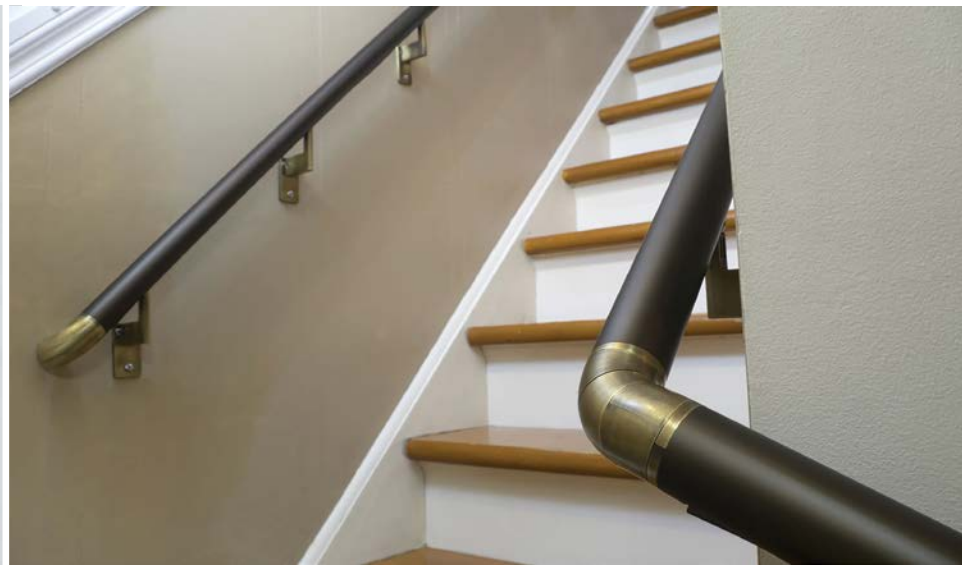
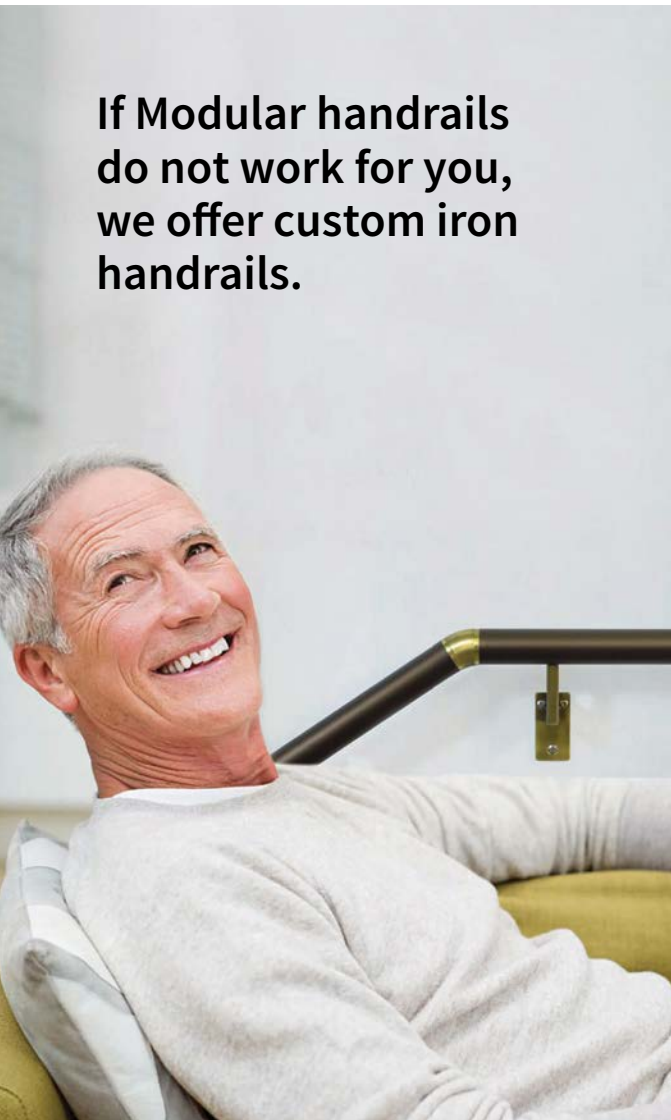
### Black Walnut

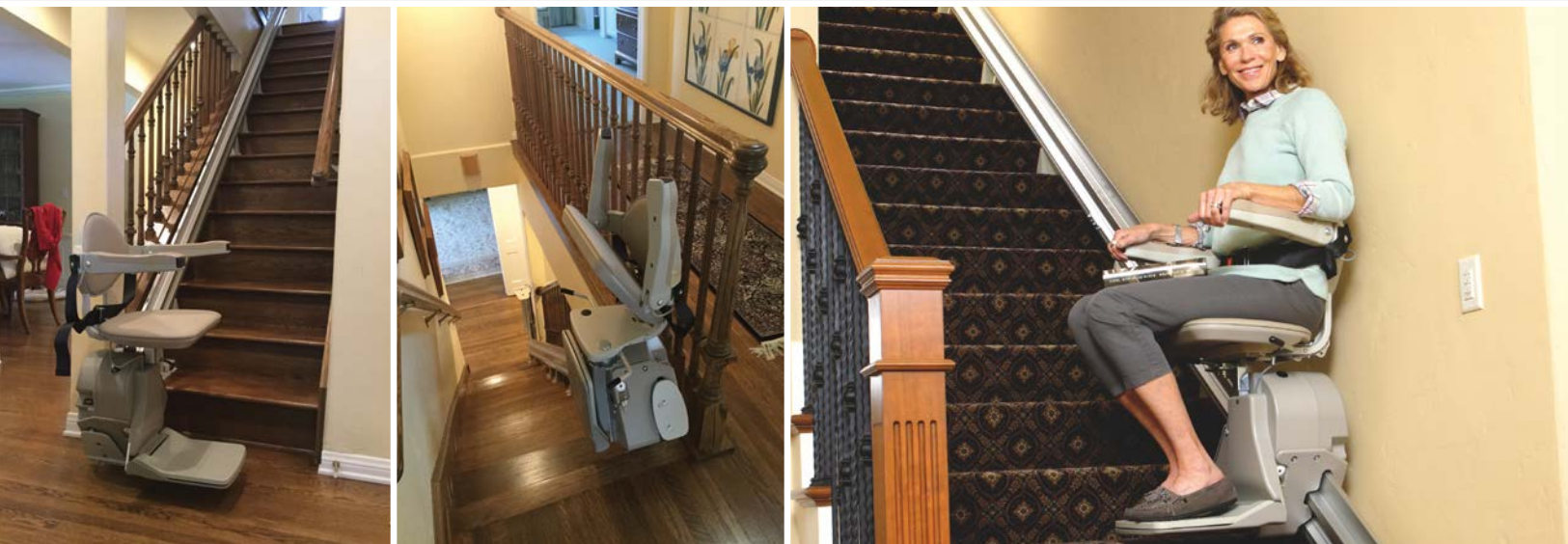


**GAMBURD**

# ***CUSTOM IRON HANDRAILS***

If Modular handrails do not work for you, we offer custom iron handrails.





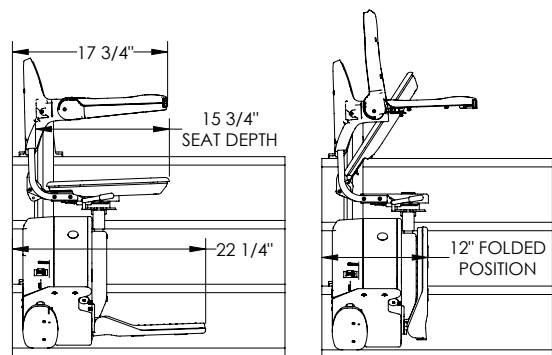
## Quiet and Compact

With a weight capacity of 300 lbs, the Bruno Elan is the ideal stairlift for today and tomorrow. Rack and pinion drive delivers a ride that is smooth and quiet, while a handsome rail hides all mechanical components. In addition, the seat, armrests and footrest all fold up into a compact unit – family and friends will have no problem using the stairs.

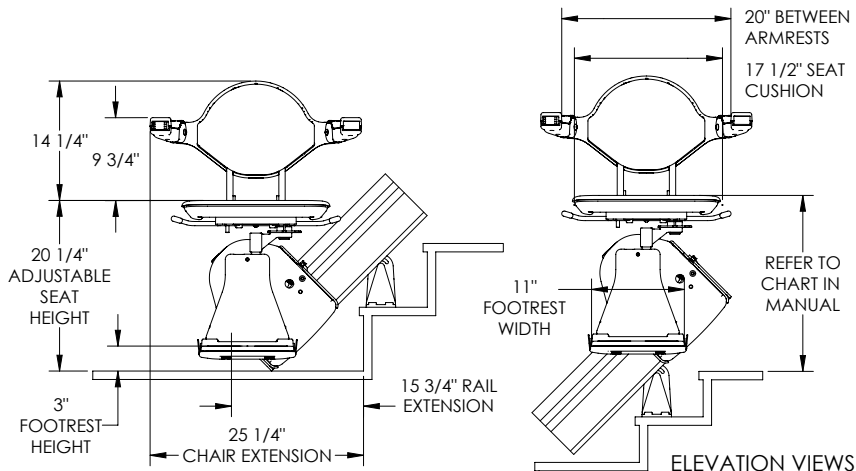
## Value

Bruno Elan offers a long list of standard features that are usually found only on more expensive units. The simplicity in design makes the Bruno Elan easier and less costly to install than other stairlifts.

**The arms, seat and footrest flip up, creating plenty of space to walk up the stairs.**



DIMENSIONS ARE BASED ON 4-1/2" RAIL TO WALL POSITION  
SIDE VIEWS



## Safety First

A dual braking system makes the Bruno Elan one of the safest stairlifts in the world. The electromagnetic braking system is complemented by a self-locking gear box and overspeed brake which completely ensures your safety. Safety sensors on the foot plate and carriage stop the unit whenever an obstruction is encountered.

## Consistent Power

The Bruno Elan uses two 12-volt batteries that are powered by a low-profile charger that plugs into any household outlet. A continuous charge along the rail is provided through a full-length charge strip. Access to upstairs and downstairs is never an issue, even when there is a power outage.



# NEXT DAY INSTALLATION WHEN AVAILABLE!



## Features

- The convenient offset swivel seat mechanism provides a safe, comfortable exit at the top of the rail
- Continuous charge strips along the entire rail mean the unit will be charged wherever it stops on the staircase
- The vertical straight rail can be installed to within 5" of the wall, and when the armrests, seat and footrest are folded, the Bruno Elan carriage takes up only 12"
- The two wireless call/send controls make installation simple and clean with no wires running along the wall

## Rentals Available

Available in certain locations, call for details and availability.

\* Rentals only available on straight units.

## Options

### Folding Rails

Manual or power folding rails - if you have a narrow hallway or doorway at the bottom of your stairs, the optional folding rail is the ideal solution. The folding rail can be ordered for feather-light manual operation or push button automatic operation.

### Power Swivel Seat

For a confident and easy exit at the top landing, the Bruno Elan offers an optional power swivel action. Controlled by the up/down rocker switch or by the call/send transmitters, the seat can turn up to 90° with a steady fluid movement. The rider will exit with improved stability and minimum effort.

### Power Folding Footrest

For your convenience the footrest can be automated. When the seat is raised the footrest will automatically flip up. When the seat is lowered the footrest will automatically flip down. This simple and efficient feature will help people with back issues or other mobility challenges.



## See This Lift in Action

Scan the QR code with camera or visit  
<https://www.gamburd.com/bruno-elan-indoor-straight-stairlift>



Max.  
300lb





## Safety First

With a weight capacity of 440 lbs (199.6 kg), and sensors that detect any obstacles on the stairs, the Bruno Elite moves up and down your staircase with power and efficiency. The offset swivel seat makes the entry and exit position at the top landing safer and easier than ever.

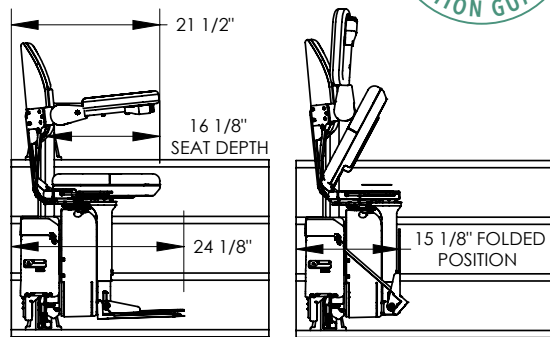
## Reliable

The Bruno Elite is equipped with two 12-volt batteries powered by a small charger that plugs into a standard outlet. Even during a temporary power outage you will enjoy uninterrupted performance from your stairlift.

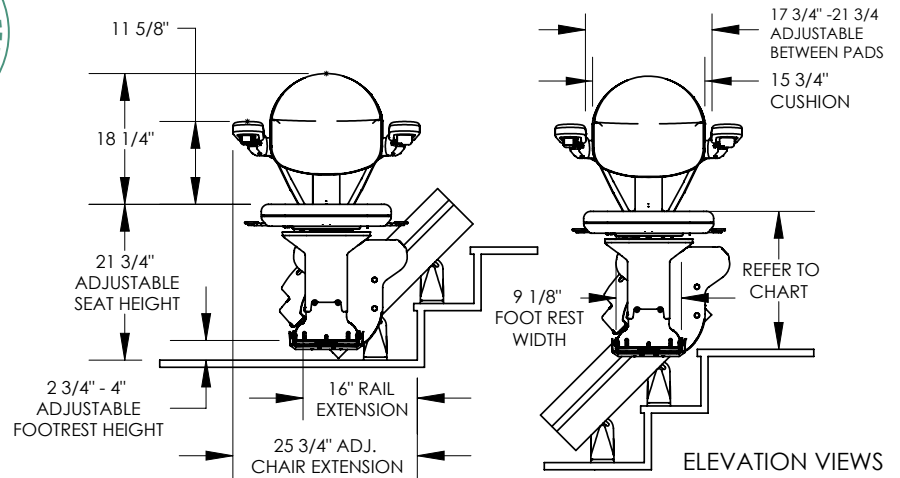
## Features

- The offset swivel seat makes the entry and exit position at the top landing easy and safe
- Safety sensors on the footrest and carriage will safely stop you with the slightest obstacle
- Continuous charge strips along the entire rail mean the unit will be charged wherever it stops on the staircase
- The two wireless call/send controls make installation simple and clean with no wires running along the wall

  
Max.  
400lb



SIDE VIEWS



ELEVATION VIEWS



# NEXT DAY INSTALLATION WHEN AVAILABLE!



## Optional Choices

### Larger Seat Option

Measuring 21.5" (546 mm) in width between the armrests, the larger seat option also features additional seat depth for added comfort and complete support.

- **Standard seat pad** 17.5" (445 mm) wide x 15" (381 mm) deep
- **Larger seat pad** 21.5" (546 mm) wide x 16" (406 mm) deep

### Larger Footrest Option

If an occupant is taller than average or has difficulty bending their knees, the additional 2" (51 mm) in length and width can make all the difference in the world.

- **Standard footrest size** 10" (254 mm) long x 9" (229 mm) wide
- **Larger footrest size** 12" (305 mm) long x 11" (279 mm) wide

### Upholstery Selections

Comes in the original Tan Standard Vinyl or your choice of the following 9 colors:

Brown Deluxe	Dark Brown Deluxe	Burgundy Leather	Maroon Vinyl	Olive Vinyl
Grey Deluxe	Burgundy Deluxe	Charcoal Vinyl	Light Brown Vinyl	Tan Standard Vinyl



### See This Lift in Action

Scan the QR code with camera or visit <https://www.gamburd.com/bruno-elite-indoor-straight-stairlift>

### Power Swivel Seat

For a confident and easy exit at the top landing, the Bruno Elite offers an optional power swivel action. Controlled by the up/down rocker switch or by the call/send transmitters, the seat can turn up to 90° with a steady, fluid movement. The rider will exit with improved stability and minimum effort.

### Manual or Power Folding Rails

If you have a narrow hallway or doorway at the bottom of your stairs, the optional folding rail is the ideal solution. The folding rail can be ordered for feather-light manual operation or push button automatic power operation. A third charging station allows you to charge the unit when the rail is folded.

### Power Folding Footrest

For your convenience the foot rest can be automated. When the seat is raised the footrest will automatically flip up. When the seat is lowered the footrest will automatically flip down. This simple and efficient feature will help people with back issues or other mobility challenges.

# BRUNO ELITE CURVED



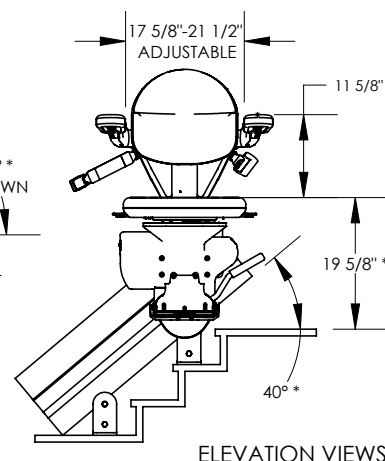
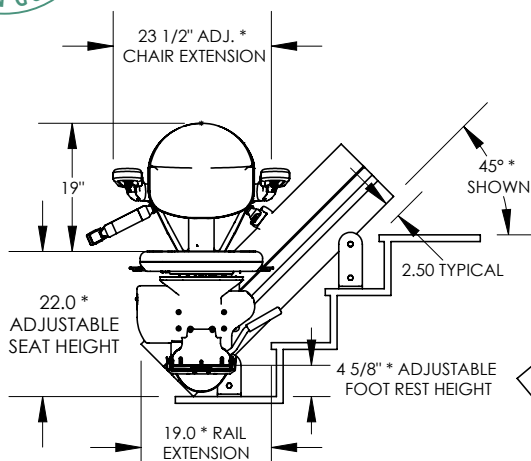
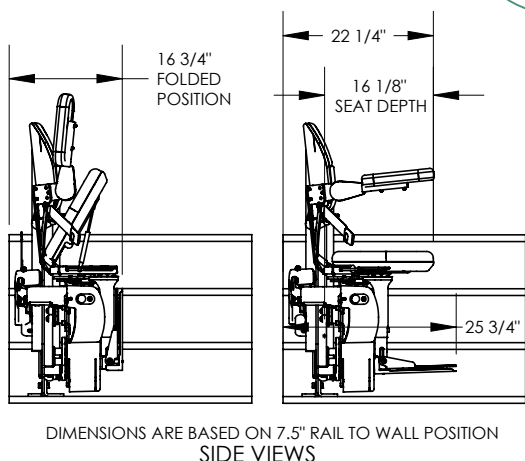
## Curved Stairlifts Custom Made for You

Imagine a custom stairlift made to the exact specifications of your stairway. That is what Gamburd does better than any installer. Our custom curved stairlifts give you back access to your home. They are attractively designed with you in mind.

With a safe and durable design, Bruno's Elite Curve can be installed on almost all stairways. Custom made and installed in just a few weeks, the graceful, elegant Bruno Elite Curve retains the beauty of your home while extending your independence throughout.

## Features

- 400 lbs weight capacity
- Direct drive motor/gear box – no belts for reduced maintenance
- Remarkable stable ride from top to bottom
- The vertical rail design allows family members ample space on the staircase
- Visual diagnostics for instant unit status
- Two 12-volt batteries – continuously powered from any household outlet – provide dependable performance, even during outages
- Arms, seat and footrest flip up creating plenty of space for family or guests to walk up and down the stairs
- Generous seat size with adjustable width armrests and multiple seat heights
- An offset swivel seat, making the entry and exit position at the top landing safe and easy





Photos shown above are Gamburd's original work

## Optional Choices

### Larger Seat Option

Measuring 21.5" (546 mm) in width between the armrests, the larger seat option also features additional seat depth for added comfort and complete support.

- **Standard seat pad** 17.5" (445 mm) wide x 15" (381 mm) deep
- **Larger seat pad** 21.5" (546 mm) wide x 16" (406 mm) deep

### Larger Footrest Option

If an occupant is taller than average or has difficulty bending their knees, the additional 2" (51 mm) in length and width can make all the difference in the world.

- **Standard footrest size** 10" (254 mm) long x 9" (229 mm) wide
- **Larger footrest size** 12" (305 mm) long x 11" (279 mm) wide

### Upholstery Selections

See page 23 for color swatches



**Max.  
400lb**

### Power Swivel Seat

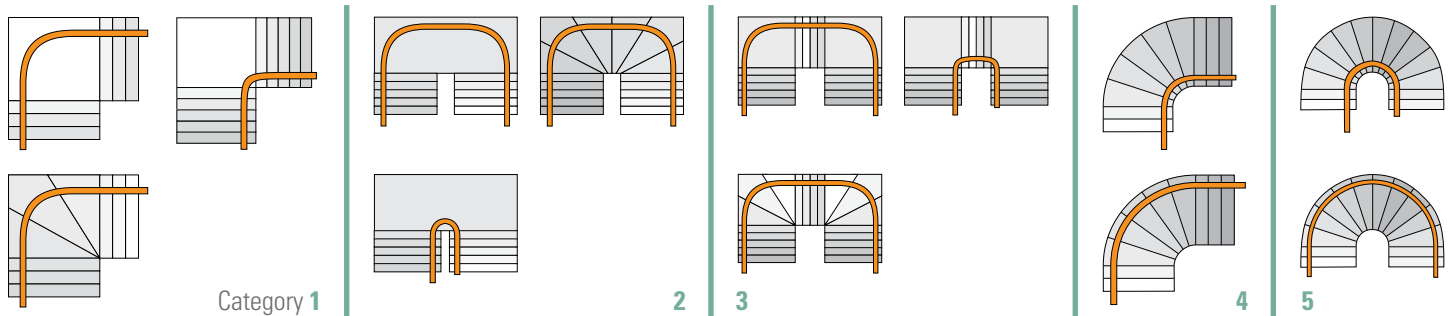
For a confident and easy exit at the top landing, the Bruno Elite Curve offers an optional power swivel action. Controlled by the up/down rocker switch or by the call/send transmitters, the seat can turn up to 90° with a steady, fluid movement. The rider exits with a minimum of effort and improved stability.

### Power Folding Footrest

For added convenience in folding the footrest, this option will be greatly appreciated. Now, the footrest can automatically flip up when the seat is raised, and flip down when the seat is lowered. It's simple, efficient and a great help for individuals with back problems or other mobility challenges.

### Mid Park and Charge

For those staircases that have a landing between the top and bottom, the Bruno Elite Curve offers an optional park position with a charging station. Exit at the landing (fold up the arms, seat and footrest) and your stairlift will be charging and ready for use when you return to go up or down.



# HANDICARE 2000



## Twin-Rail Stairlift

The 2000 is a well established and versatile stairlift system with the tightest track bends available in the industry. It can accommodate a wide range of stair configurations and will hug the edge of your staircase leaving you with more room.

The twin rail system provides a safe and smooth ride. It is available in two colors as standard, light grey or gun metal, but can actually be supplied in any color to match your décor.



## Seats

Choose your most convenient seat. The seat for the 2000 is available in three variations to suit individual needs.

### Smart Seat

The smart seat is supplied with wipe clean, flame retardant upholstery in a choice of five colors. You can even replace upholstery later should you wish to change your color scheme.

### Perch Seat

The perch seat proved the ideal option for users with limited hip and knee flexibility. A perch seat means that the user is almost in a standing position when they are using the lift. There is a shortened seat and retractable seat belt which provide a stable support area for users to 'perch' on.

### 2000 Simplicity

The Simplicity seat is affordable, compact and easy to clean. You can choose to fit your seat with a foldable footplate, which will fold up automatically along with the seat. The seat comes in a neutral colour that will compliment most colour schemes.



See This Lift in Action

Scan the QR code with camera or visit  
<https://www.gamburd.com/handicare-curved-stairlift-2000>

# FINANCING AVAILABLE!



## Functions

### Powered Footplate

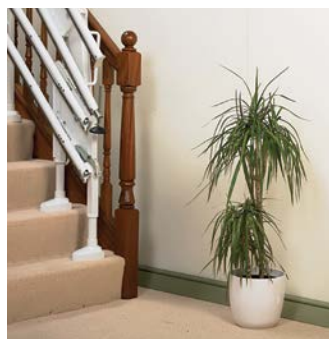
You may want to choose a powered footplate that will automatically fold your footrest up or down when your seat is folded. This removes the need for you to bend.

### Remote Control

All Handicare stairlifts come with two remote controls as standard, so you can have one upstairs and one downstairs. This means you can send your stairlift up and down the track without having to sit on it. This not only allows you to park at the top or bottom of the stairs, it is ideal for multi-user situations as your stairlift can be called between levels, just like an elevator.

### Hinge Track

You need not worry that doorways will be obscured or that tracks will cause excessive trip hazards. A hinge track is available for the 2000. The fully automatic hinge track will be raised and lowered without the user having to operate it.



### Swivelling Your Seat

The seat of the 2000 can be swivelled at the top of the staircase. You have the choice of a powered or manual swivel function. Moreover, the track can be designed to take you from the ground floor directly onto the landing level, to suit your needs exactly.

### Safety as a Standard

Rapid response safety sensors stop the stairlift if it meets with an obstruction during travel. Once the obstruction is removed the stairlift can continue on its journey.

Your stairlift will also come with a seat belt as standard for additional peace of mind. Also, all Handicare stairlifts have an easily accessible key switch that allows you to disable the lift and prevent unauthorized use. You do not need to worry about unsupervised children playing with your stairlift.

**GAMBURD**

(877) 362-4597

27

# HANDICARE FREELIFT



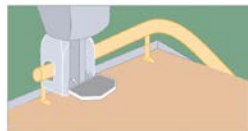
## A Tailor-Made Solution

Perfectly finished, 100% made to measure... and yet rapidly installed at your home. We will, after an informal visit, explain all the features of our stairlifts to you in detail. Each Handicare stairlift is designed to suit your individual staircase. We use advanced PhotoSurvey technology to make accurate measurements and we have all the options available to ensure the best possible fit for your staircase.

### Rail End Variations – Top and Bottom



90° top parking bend



Top over-run



Standard



Drop Nose



Bottom over-run



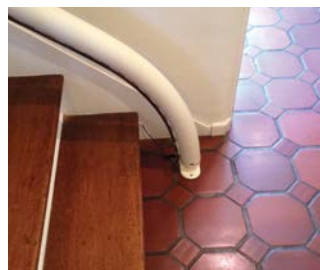
90° parking bend bottom



180° parking bend bottom

### Drop Nose

Handicare's tight-fitting drop nose rail can save having to fit a hinged track at the bottom of the stairs.



### Automatic Folding Hinge

To avoid any obstruction at the bottom of the stairs (e.g. where there is a doorway), an automatic hinged rail with safety system is available.

### A Rail Color That Matches

Handicare's curved rail matches every interior and is available in the colours cream-white, brown and grey.



### 45° Downward Facing Seat

The seat is able to travel downward facing at 45°. This means that where a stairwell is particularly narrow, or a user has limited knee flexion, you can fit a Freelift Van Gogh with a 45° seat and special footplate. This could avoid the inconvenience of major building adaptations, or save on the cost of a through floor lift.

# FINANCING AVAILABLE!

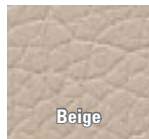


## Seat Options

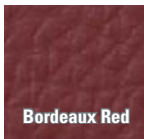
Handicare stairlifts offers you the choice of different stairlift seats, each of them available in a range of colors:

### Elegance Seat

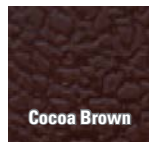
This seat is lightly padded and offers a harmonious combination for elegant design and sophisticated comfort.



Beige



Bordeaux Red



Cocoa Brown

### Alliance Seat

Beautiful dark wood and cream upholstery finish



### Classic Seat

The best-selling classic seat has an attractive leather grain effect finish. Made from durable, non-slip polyurethane, it is hard wearing and easy to clean.



Beige



Bordeaux Red



Anthracite



White Wood & Bordeaux Upholstery Finish



White Wood & Brown Upholstery Finish

**GAMBURD**



Gamburd Exclusive  
Stairlift Basket

## Access to the Great Outdoors!

Access to your home from an exterior staircase is no longer a problem. The Bruno Outdoor Elite is now the leading outdoor stairlift. This remarkable stairlift provides you with the quality, comfort, and dependability you desire. The standard options on this attractive stairlift will surprise and please you.

Built in Wisconsin and tested in all types of weather, the Outdoor Elite is reliable, safe, durable and designed to withstand the elements. An outdoor stairlift of this quality allows you to navigate the stairs outside your home with confidence and ease – any time of year!

With innumerable uses – from your front door to the sidewalk or your cabin door to the boathouse – this outdoor stairlift offers unique mobility. Only a home stairlift designed like this one can extend your independence safely and securely outside your home. Not all chairlifts are created equally.



## See This Lift in Action

Scan the QR code with camera or visit  
[https://www.gamburd.com/  
bruno-elite-outdoor-straight-stairlift](https://www.gamburd.com/bruno-elite-outdoor-straight-stairlift)

## Features

- Specifically designed for exterior use, providing you with the same quality, comfort and convenience available in Bruno's complete line of straight rail and curved rail stairlifts
- Durable, powder coat outdoor paint that protects all steel surfaces
- Clear anodized aluminum rail
- Seat cushions made from exterior marine-grade vinyl
- Tested for use in weather temperatures ranging from 0°F to 125°F (-15°C to 52°C)
- Innovative weather resistant cover system travels with the chair and provides protection from the elements when the stairlift is not in use.
- 400 lbs weight capacity
- Direct drive motor/gear box – no belts for reduced maintenance
- Remarkable stability through the improved clamping and rail design
- A vertical, straight rail that installs to within inches from the edge of the staircase – family members and guests will have no problem using the stairs
- Visual diagnostics for instant unit status
- Two 12-volt batteries – continuously powered from any household outlet – provide dependable performance, even during power outages
- Arms, seat and footrest flip up creating plenty of space for family or guests to walk up and down the stairs
- Generous seat size with adjustable width arm rests and multiple seat heights
- An offset swivel seat makes the entry and exit position at the top landing safe and easy
- Extended rail lengths available



**IN STOCK NOW! RENTALS AVAILABLE**



## Superior Styling

### Performance

The Outdoor Elite is specifically designed for exterior use, providing you with the same quality, comfort and convenience available with Gamburd's complete line of straight rail and curved rail stairlifts. Gamburd dependability built in!

### Refinement

The Outdoor Elite represents more than a decade of research and engineering. With a honeycomb rail design for improved stability, and visual coded diagnostics to instantly analyze the unit's operational status, the Outdoor Elite is the perfect example of form and function.

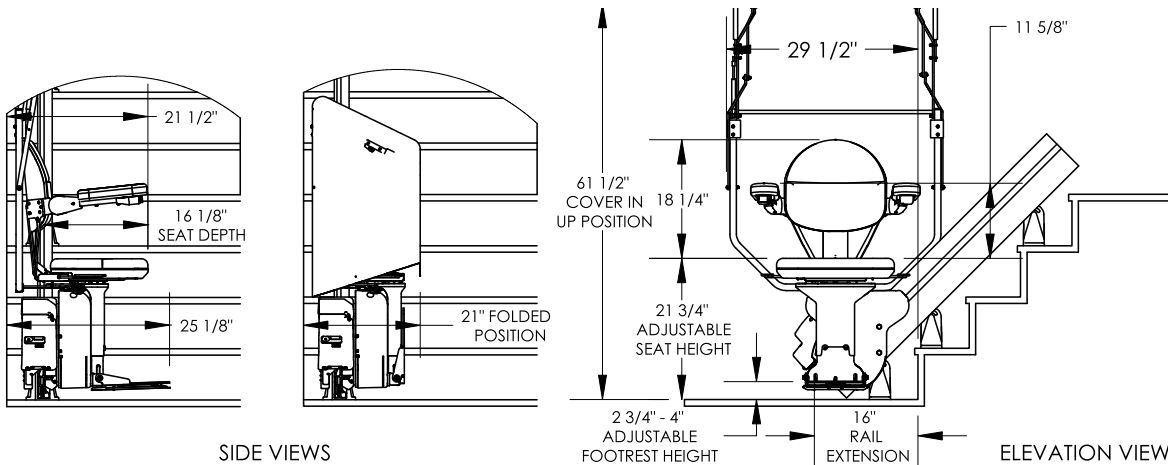
## Quality Craftsmanship

### Safety

With a rated weight capacity of 400 lbs (181 kg) and sensors that detect any obstacles on the stairs, the Outdoor Elite moves up and down your exterior stairs with power and efficiency. The offset swivel seat makes the entry and exit at the top landing safer and easier than ever.

### Reliable

Equipped with two 12-volt batteries powered by a small, unobtrusive battery charger that requires no special electrical wiring, the Outdoor Elite provides uninterrupted performance, even during a temporary failure of electrical service to your home.



SIDE VIEWS

ELEVATION VIEW

  
Max.  
400lb



# BRUNO OUTDOOR ELITE CURVED



Photos shown above are Gamburd's original work

## Outdoor Elite Curved Rail

The Bruno Outdoor Elite Curved rail stairlift is specifically designed for exterior use. It is custom made for you with the same care as Bruno's complete line of stairlifts.

With a rail design for improved stability, and visual coded diagnostics to instantly analyze the unit's operational status, the Outdoor Elite Curve is the perfect example of form and function.

The Outdoor Elite Curve moves up and down your exterior stairs with power and efficiency. The offset swivel seat makes the entry and exit at the top landing safer and easier than ever.



A weather-resistant cover is secured in a convenient pouch beneath the seat when cover is not being used.

## Features

- Specifically designed for exterior use, providing you with the same quality, comfort and convenience available in Bruno's complete line of straight rail and curved rail stairlifts
- Durable, powder coat outdoor paint that protects all steel surfaces
- Seat cushions made from exterior marine-grade vinyl
- Tested for use in weather temperatures ranging from 0°F to 125°F (-15°C to 52°C)
- 400 lbs weight capacity
- Direct drive motor/gear box – no belts for reduced maintenance
- Remarkable stable ride from top to bottom
- Weather resistant cover provides protection from the elements when not in use and can be stored in a pouch conveniently located under the seat during operation
- Two 12-volt batteries – continuously powered from any household outlet – provide dependable performance, even during outages
- Arms, seat and footrest flip up creating plenty of space for family or guests to walk up and down the stairs
- Generous seat size with adjustable width arm rests and multiple seat heights
- An offset swivel seat makes the entry and exit position at the top landing safe and easy



Max.  
400lb



See This Lift in Action

Scan the QR code with camera or visit  
[https://www.gamburd.com/  
bruno-elite-outdoor-curved-stairlift](https://www.gamburd.com/bruno-elite-outdoor-curved-stairlift)

**FINANCING AVAILABLE!**

MADE IN USA



## Superior Styling

### Performance

The Bruno Outdoor Elite is designed to be tough but we haven't sacrificed comfort or design. This attractive stairlift will stand up to weather and carry you to your home in style.

### Refinement

The Bruno Outdoor Elite Curve represents more than a decade of research and engineering. With a rail design for improved stability, and visual coded diagnostics to instantly analyze the unit's operational status, the Bruno Outdoor Elite Curve is the perfect example of form and function.

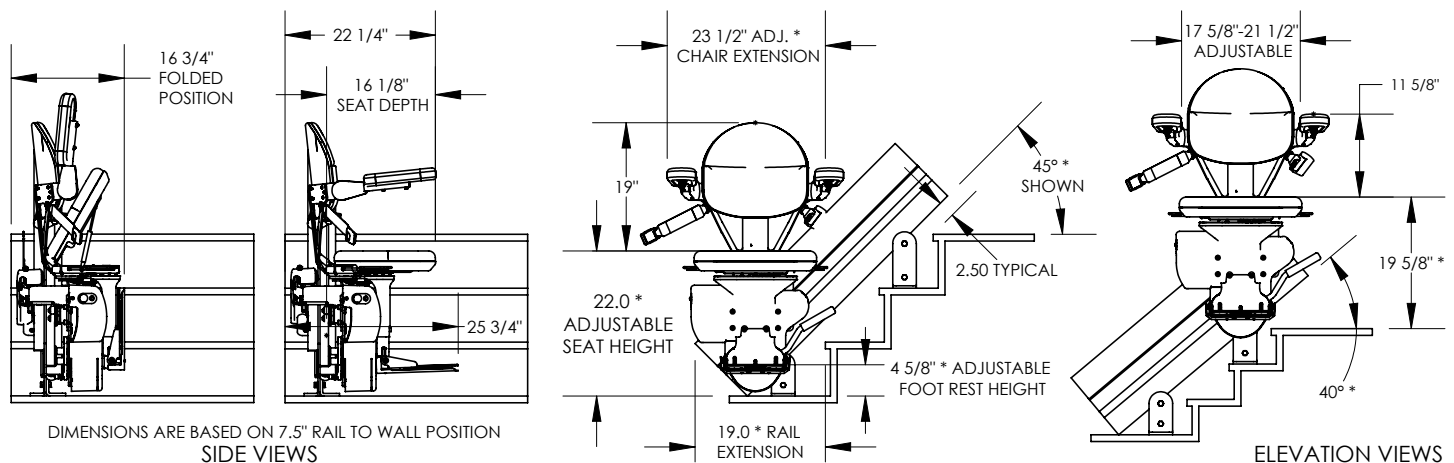
## Quality Craftsmanship

### Safety

With a rated weight capacity of 400 lbs (181 kg) and sensors that detect any obstacles on the stairs, the Bruno Outdoor Elite Curve moves up and down your exterior stairs with power and efficiency. The offset swivel seat makes the entry and exit at the top landing safer and easier than ever.

### Reliable

Equipped with two 12-volt batteries powered by a small, unobtrusive battery charger that requires no special electrical wiring, the Bruno Outdoor Elite provides uninterrupted performance, even during a temporary failure of electrical service to your home.



# SCALAMOBIL



## Using Stairs the Easy Way

### Converts your wheelchair into a mobile stair wheelchair.

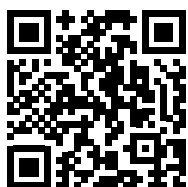
Scalamobil is a battery operated portable stair climber that attaches to most manual wheelchairs. This innovative device can ascend or descend almost any type of stair from **spiral staircases** to wood or stone step surfaces without wear and tear. No modifications or installations to existing building structures are required.

Scalamobil is compact and lightweight making it ideal to transport and store. Scalamobil weighs just 54 lbs (25 kg) and can carry a maximum load of 265 lbs (120 kg) up 300 steps on one battery charge.

## Climb Stairs in Your Own Wheelchair!

With four rotating wheels at the base of the unit Scalamobil moves easily up and down steps at your pace with the adjustable speed control or step-by-step function.

Each wheel is equipped with a safety brake that automatically stops at the edge of every step. Scalamobil must be used in accordance with the operating instructions.



See This Lift in Action

Scan the QR code with camera or visit  
<https://www.gamburd.com/scalamobil>

## Features

- Masters steps effortlessly
- Climbs up to 300 steps with a single battery charge
- Supports occupant weights up to 308 lbs (140 kg) - without wheelchair
- Tackles narrow and spiral staircases
- Stairs are not subject to damage or wear, thanks to the intelligent climbing system
- Four automatic brakes for maximum safety
- Can be fitted to most manual wheelchairs
- Patented safety sensors
- Also available with push-chair or integrated seat unit

## Technical Data

- **Battery pack** 2 x 12 V; 3.4 Ah
- **Battery charger (input)** 90 - 240 V AC
- **Battery charger (output)** 24 V DC
- **Operating voltage** 24 V
- **Climbing speed** 6-19 steps/min.
- **Motor rating** 176 W
- **Max. permitted total weight** max. 396 lbs (180 kg)
- **Capacity per battery charge** approx. 300 steps

# STAIR-TRAC IN STOCK NOW! RENTALS AVAILABLE



## Stair-Trac Portable Wheelchair Lift

The Garaventa Stair-Trac is an easy to use, portable wheelchair lift designed to attach to most manual wheelchairs.

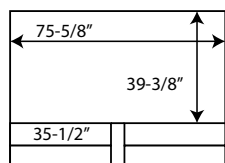
The powerful motor allows a small attendant to safely transport a larger passenger up or down stairs. The Stair-Trac is suitable for indoor or outdoor use, in public buildings or private homes. It is an affordable and reliable accessibility solution.

## Features

- Attaches to most standard manual wheelchairs with push handles
- Robust battery - fully charged it can carry 150 kg (330 lbs) up 30 flights of stairs
- Works on virtually any indoor or outdoor stairway
- Stable and self supporting
- Durable steel reinforced rubber tracks grip stairs securely
- Detachable support handle for compact storage and easy transport
- Quick release safety belt
- Key switch controls unauthorized use
- Rechargeable batteries

## Clearances

This diagram shows typical clearances required on turnback stairways. Dimensions vary slightly with stairway width and operator experience.



## Benefits

- An economical alternative to stairway lifts and elevators
- May be used on several different stairways
- Provides accessibility where power is unavailable
- Stores easily when not in use
- Requires minimal maintenance
- Available immediately
- 2 year standard warranty
- Available extended warranty (3 additional years) - USA/Canada only

## Technical Data

- **Dimensions** 57 1/4" L x 25 3/8" W x 35 5/8" H
- **Weight** 130 lbs
- **Load capacity** 330 lbs
- **Speed (up)** 20 ft/min.
- **Speed (down)** 35 ft/min.
- **Operating controls** Constant pressure drive control switch
- **Motor** 12 V DC
- **Batteries** 2 x 6 V - 20 Ah
- **Maximum charge rate** 4 A
- **Optimum stair angle** 35°
- **Typical battery charge capacity** 650 stairs



## See This Lift in Action

Scan the QR code with camera or visit <https://www.gamburd.com/garavanta-stairtrac>

# SHOWERBUDDY SB1



## ShowerBuddy SB1

The ShowerBuddy SB1 shower transfer system will turn your existing bathroom into an accessible bathroom that allows you to enjoy showering again without the excessive cost, delay and stress of a full bathroom remodel.

The ShowerBuddy SB1 alleviates heavy lifting and multiple transfers for toileting and showering. This chair is separated into three sections; rolling base (shower chair), bridge and shower base. The rolling base rolls around the house like a wheelchair allowing patient to easily transfer and then roll right over a toilet (certain toilets).

Once completed with toileting, the rolling base can connect to the bridge and then onto the shower base allowing the chair to slide into the shower. Once inside the shower, the bridge disconnects and the shower base turns allowing the user to face the shower controls.

The Showerbuddy system is made of aluminum which will not rust or corrode when in contact with water. Height adjustability on rolling base and shower base- allowing for use in a variety of shower stall sizes. Rolls over some toilets- allowing for "no mess" alternative to commode usage. Custom bridge sizes are available- allowing for use in a variety of bathroom sizes.



Scan to Learn More

Scan the QR code with camera or visit  
<http://myshowerbuddy.com/showerbuddy/>

# FOR THE SHOWER



Shower Base

Bridge

Rolling Base



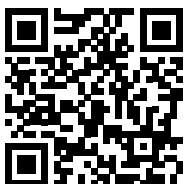
# SHOWERBUDDY SB2



## ShowerBuddy SB2

The TubBuddy SB2 transfer system will turn your existing bath tub into an accessible bathroom that allows you to enjoy showering again without the excessive cost, delay and stress of a full bathroom remodel. The TubBuddy SB2 alleviates heavy lifting and multiple transfers for toileting and showering. This chair is separated into three sections; rolling base (shower chair), bridge and tub base. The rolling base rolls around the house like a wheelchair allowing patient to easily transfer and then roll right over most toilets. Once completed with toileting, the rolling base connects to a bridge and then onto the tub base allowing the chair to slide over the tub. Once over the tub, the bridge disconnects allowing the curtain to close.

- The TubBuddy SB2 system is made of aluminum which will not rust when in contact with water.
- Height adjustability on rolling base and tub base- allowing for use in a variety of tubs.
- Rolls over some toilets- allowing for "no mess" alternative to commode usage.
- Custom bridge sizes are available- allowing for use in a variety of bathroom sizes.



Scan to Learn More

Scan the QR code with camera or visit  
<http://myshowerbuddy.com/tubbuddy/>



# SHOWERBUDDY SB2T



## ShowerBuddy SB2T

The TubBuddy with Tilt SB2T transfer system will turn your existing bath tub into an accessible bathroom that allows you to enjoy showering again without the excessive cost, delay and stress of a full bathroom remodel.

The TubBuddy with Tilt SB2T alleviates heavy lifting and multiple transfers for toileting and showering. This chair is separated into three sections; rolling base (shower chair), bridge and tub base. The rolling base rolls around the house like a wheelchair allowing patient to easily transfer and then roll right over most toilets. Once completed with toileting, the rolling base connects to a bridge and then onto the tub base allowing the chair to slide in a tilt position over the tub. Once over the tub, the bridge disconnects allowing the curtain to close.

- The TubBuddy with Tilt SB2T allows the chair to tilt while transferring over the tub preventing the caregiver lifting the patients legs over the tub.
- The system is made of aluminum which will not rust when in contact with water.
- Height adjustability on rolling base and tub base- allowing for use in a variety of tubs.
- Rolls over some toilets- allowing for "no mess" alternative to commode usage.
- Custom bridge sizes are available- allowing for use in a variety of bathroom sizes.





Scan to Learn More

Scan the QR code with camera or visit  
<http://myshowerbuddy.com/tubbuddy-with-tilt/>

**GAMBURD**

# SHOWERBUDDY SB3T, SB6W, SB6C

## ShowerBuddy SB3T

The Showerbuddy SB3T rolling shower chair is perfect for an accessible or roll-in wet area showers. The SB3T rolls over most toilets and offers a tilt which releases pressure for the user and improves comfort. The chair comes with a standard front opening cushion, swing away and removable footrest, flip back and removable armrest, 4" lockable casters, removable commode, seat belts and it's height adjustable.



Scan For More Information

Scan the QR code with camera or visit  
[http://myshowerbuddy.com/  
roll-in-buddy-with-tilt/](http://myshowerbuddy.com/roll-in-buddy-with-tilt/)

**GAMBURD**

# FOR THE ROLL-IN SHOWER



## ShowerBuddy SB6W



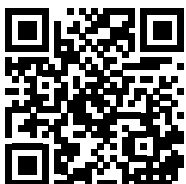
The Showerbuddy SB6W is our only self propelled shower chair. It features the same aesthetics as the original line of Showerbuddy products at a fraction of the cost. Showerbuddy SB6W comes with large self propelled wheels, a standard front opening cushion, swing away and removable footrest, flip back and removable armrest. An optional left, right and full round cushions along with a solid backrest is available as an add-on. The Showerbuddy SB6W is height adjustable and comes with a removable commode bucket so you can roll it from bedside to over the toilet.



## ShowerBuddy SB6C



The Showerbuddy SB6C features the same aesthetics as the original line of Showerbuddy products at a fraction of the cost. Showerbuddy SB6C comes with a standard front opening cushion, swing away and removable footrest, flip back and removable armrest. An optional left, right and full round cushions along with a solid backrest is available as an add-on. The SB6's is height adjustable and comes with a removable commode bucket so you can roll it from bedside to over the toilet.



Scan For More Information

Scan the QR code with camera or visit  
<https://www.gamburd.com/showerbuddy-sb6w>



Scan For More Information

Scan the QR code with camera or visit  
<https://www.gamburd.com/showerbuddy-sb6c>

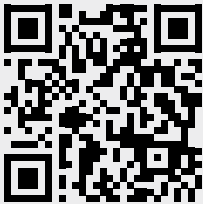
# WESSEX VE LIFT

An alternative to a stairlift



## See This Lift in Action

Scan the QR code with camera or visit  
<https://www.gamburd.com/wessex-ve>



Place arrow against the wall of the staircase to measure how much approximate space the rail will take up

Bruno Elite Curved Rail



Bruno Elite Rail



Bruno Elan Rail



**GAMBURD**

### Los Angeles Showroom

12405 Montague St  
Pacoima, CA 91331  
Phone: (877) 362-4597

### San Francisco Showroom

29400 Kohoutek Way, Suite 180  
Union City, CA 94587  
Phone: (877) 362-4597



 @gamburd

 facebook.com/gamburdinc

 youtube.com/gamburd

Website: [www.gamburd.com](http://www.gamburd.com) | Email: [info@gamburd.com](mailto:info@gamburd.com) | License: 939455

10 INCHES

9

8

7

6

5

4

3

2

1

0